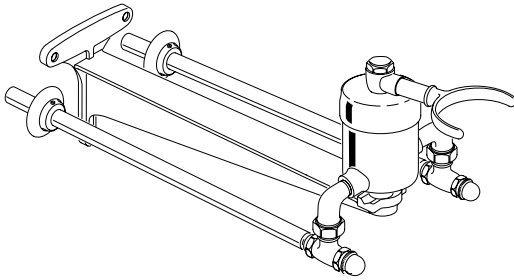


# American Standard

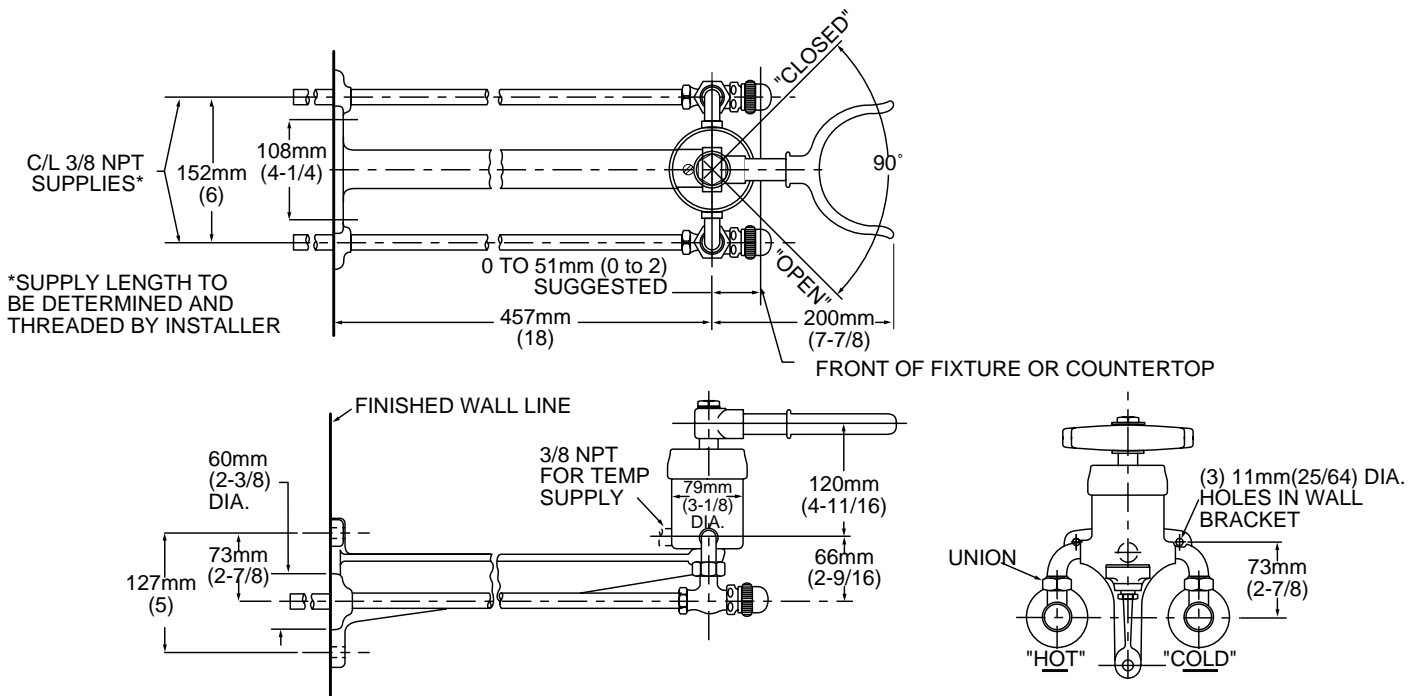
## COMMERCIAL

### KNEE ACTION MIXING VALVE



#### MODEL NUMBER:

- 7676.029 Knee Action Mixing Valve  
Renewable seat. Screwdriver stops. Wall support bracket. Wall escutcheons.



#### GENERAL DESCRIPTION:

Brass mixing valve controlled by knee action. Renewable seats. Screwdriver stops. Chrome plated housing. 3/8" supplies to wall on 6" (152mm) centers with wall escutcheons and wall mounting support bracket. Fits beneath 18" to 20" deck.

#### PRODUCT FEATURES:

**Brass Construction:** Durable - excellent in high use applications.

**Brass Valving:** Water supply controlled by moving knee left/right. Renewable seats. Screwdriver stops. Chrome plated supplies can be cut to length and threaded at job site.

**Rigid Wall Support Bracket:** Sturdy aluminum alloy support. Wall mounted, fits below 18" to 20" deck.

**Polished Chrome Finish:** Excellent in commercial applications.

#### SUGGESTED SPECIFICATION

Knee action mixing valve shall feature brass valve construction, renewable seats, screwdriver stops and aluminum alloy support to wall. Installation to be 18" to 20" beneath deck. Shall feature 3/8" supplies to wall on 6" centers. Fitting shall be American Standard Model# 7676.029.