

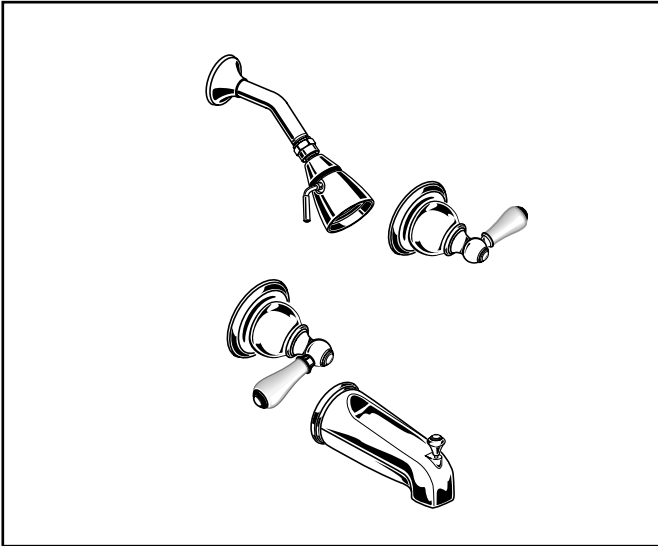
American Standard

HAMPTON

TWO-HANDLE BATH/SHOWER FITTING

MODEL NUMBER:*

- 7220.702 Bath/Shower Fitting**
I.P.S. diverter spout. Porcelain Cross handles.
- 7221.702 Shower Only Fitting** 
I.P.S. Porcelain Cross handles.
- 7220.712 Bath/Shower Fitting**
I.P.S. diverter spout. Porcelain Lever handles.
- 7221.712 Shower Only Fitting** 
Porcelain Lever handles.
- 7220.722 Bath/Shower Fitting**
I.P.S. diverter spout. Metal Cross handles.
- 7221.722 Shower Only Fitting** 
Metal Cross handles.
- 7220.732 Bath/Shower Fitting**
I.P.S. diverter spout. Metal Lever handles.
- 7221.732 Shower Only Fitting** 
Metal Lever handles.



7220.712 Shown

GENERAL DESCRIPTION:

Cast brass valve body on 8 inch centers. 1/4 turn washerless ceramic disc valve cartridges - reversible for use with either lever or cross handles. 1/2" N.P.T. female threaded inlets and outlets. Adjustable brass showerhead with 2.5 gpm/9.5L/min. flow restrictor.

PRODUCT FEATURES:

Brass Construction: Durable - Ideal for prolonged contact with water. Provides the finest surface for application of all finishes.

Ceramic Disc Valve Cartridges: Assures a lifetime of drip-free performance.

Increased roughing-in: 42mm to 86mm (1-5/8 to 3-3/8).

Exclusive Valve Escutcheon Design: 3 piece escutcheon design accommodates deep and shallow rough-ins. Provides water tight seal around valves.

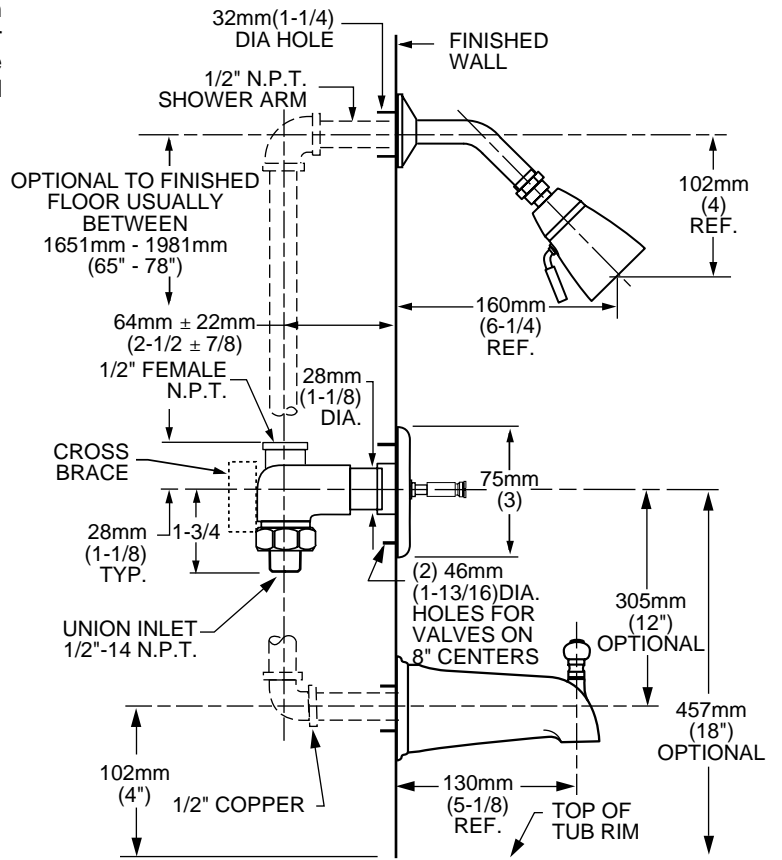
Integral Unions: No soldering required.

Exclusive Handle Alignment System: Allows fine tuning of handle position.

Choice of Finishes: Wide range of durable finishes.

Exclusive Plaster Guard: Plaster guard can be used to test for leaks prior to handle installation.

* See reverse for Valve Only versions.



SUGGESTED SPECIFICATION:

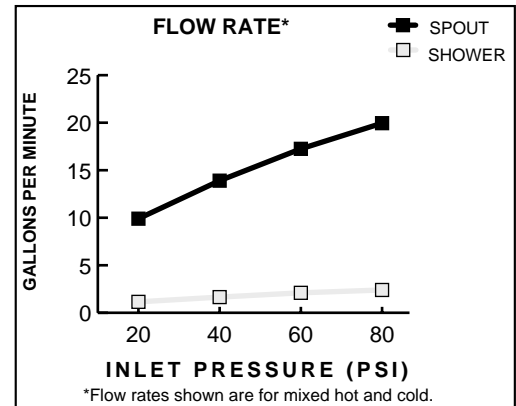
Two handle bath/shower fitting shall feature cast brass construction. Shall also feature 1/4 turn washerless ceramic disc valve cartridges that are reversible for use with cross or lever handles. Fitting shall be American Standard Model # _____.





TWO-HANDLE BATH/SHOWER FITTING

CODES AND STANDARDS


These products meet or exceed the following codes and standards:

ASME A112.18.1M
CSA B 125



	Product Number	Description	Finish Options							
			Polished Chrome	PVD Blackened Bronze	PVD Polished Brass	PVD Satin/Chrome Mix	Velvet	PVD Satin	PVD Satin/Brass Mix	P.Chrome /PVD Brass Mix
			002	068	099	221	285	295	297	299
	7220.702	Two handle Bath/Shower. Porcelain Cross handles.		N/A		N/A			N/A	N/A
	7221.702	Two handle Shower Only. Porcelain Cross handles.		N/A		N/A			N/A	N/A
	7222.702	Two handle Valve Only. Porcelain Cross handles.		N/A	N/A	N/A	N/A	N/A	N/A	N/A
	7220.712	Two handle Bath/Shower. Porcelain Lever handles.		N/A		N/A			N/A	N/A
	7221.712	Two handle Shower Only. Porcelain Lever handles.		N/A		N/A			N/A	N/A
	7222.712	Two handle Valve Only. Porcelain Lever handles.		N/A	N/A	N/A	N/A	N/A	N/A	N/A
	7220.722	Two handle Bath/Shower. Metal Cross handles.		N/A		N/A			N/A	N/A
	7221.722	Two handle Shower Only. Metal Cross handles.		N/A		N/A			N/A	N/A
	7222.722	Two handle Valve Only. Metal Cross handles.		N/A	N/A	N/A	N/A	N/A	N/A	N/A
	7220.732	Two handle Bath/Shower. Metal Lever handles.								
	7221.732	Two handle Shower Only. Metal Lever handles.								
	7222.732	Two handle Valve Only. Metal Lever handles.		N/A	N/A	N/A	N/A	N/A	N/A	N/A

N/A = NOT AVAILABLE

 Meets the American Disabilities Act Guidelines and **ANSI A117.1** Requirements for the physically challenged.